



Tithe Close, Mill Hill, NW7

£685,000

Positioned within a quiet and well-regarded residential close, this well-presented three-bedroom home offers bright and practical accommodation arranged across two floors, appealing to families, first-time buyers, and downsizers alike.

The ground floor comprises a spacious reception room providing a comfortable main living area, alongside a well-sized kitchen offering ample storage and workspace. Both spaces are ideally suited to everyday living and entertaining. A convenient guest WC completes the ground floor.

The first floor provides three bedrooms, including a principal bedroom with fitted storage, together with additional bedrooms offering flexibility for family members, guests, or home office use. A family bathroom serves the upper level.

Externally, the property benefits from a private rear garden, providing valuable outdoor space ideal for relaxation or entertaining.

Tithe Close is conveniently located for Mill Hill's excellent local amenities, including shops, schools, green spaces, and transport links, making this an exceptionally practical and well-connected location.
Sole Agents.

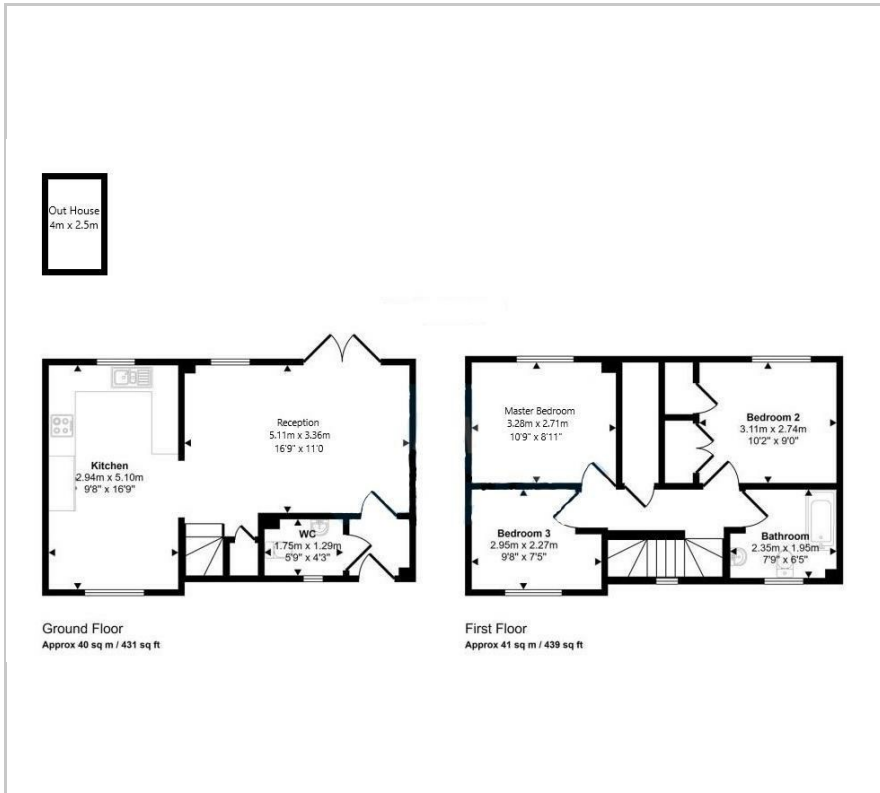
- Three bedroom detached home
- Spacious reception room
- Well-sized kitchen
- Guest WC
- Family bathroom
- Private rear garden
- Quiet residential close
- Sought-after NW7 location

Viewing

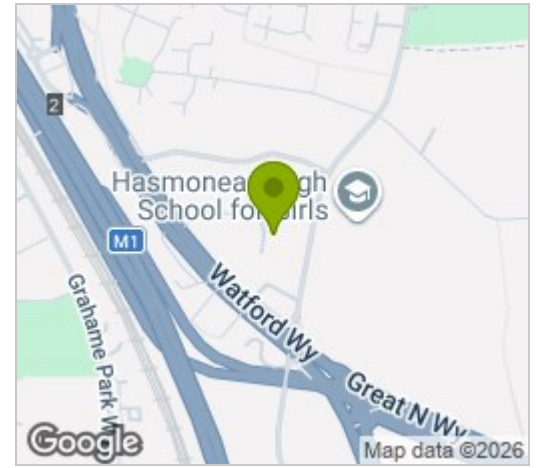
Please contact our Mill Hill Office on 02089590011 if you wish to arrange a viewing appointment for this property or require further information.



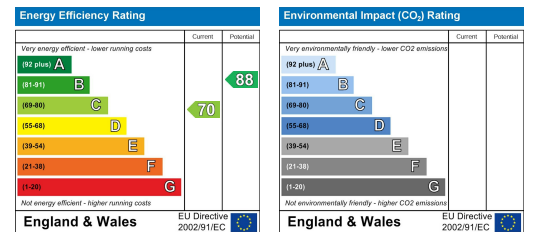
Floor Plan



Area Map



Energy Efficiency Graph



These particulars, whilst believed to be accurate are set out as a general outline only for guidance and do not constitute any part of an offer or contract. Intending purchasers should not rely on them as statements of representation of fact, but must satisfy themselves by inspection or otherwise as to their accuracy. No person in this firm's employment has the authority to make or give any representation or warranty in respect of the property.